



The Stratos 900 Series harsh environment connectors are designed for deployment in the toughest applications where high performance and total reliability are critical. Benefiting from Stratos expanded beam technology, with a long and proven industry track record, the precision optical alignment system creates immunity from water, mud, dust, oil and other contaminants which normally ingress the optical path and rapidly deteriorate performance in a field environment.

The 900 Series Hermaphroditic design eliminates the need for adaptors and male and female mating halves. Hermaphroditic housings allow for rapid field deployment, creating low loss singlemode, multimode or Hybrid daisy chained links. Ideally suited in environmental extremities where low maintenance and quick reparability is necessary the connectors are uniquely field installable, rapid field repairable, and are available in a broad range of multi-channel configurations including bulkhead feed throughs. A variety of shell materials make the 900 Series suitable for use in extreme arctic marine environments through to military platforms used in the most hostile of desert conditions.

The 900 series Expanded Beam Fibre Optic Connectors deliver a proven pedigree and world beating capability.

### Features:

- Advanced expanded beam technology
- Hermaphroditic interconnection
- 2 or 4 Fibre channels Singlemode or Multimode
- 2 + 2 Hybrid Configuration
- Multiple wavelength capability
- Rugged field repairable connector design

### Benefits:

- Best optical performance available
- No adaptors necessary
- Operational flexibility
- Durable and field proven
- Inexpensive, low downtime field repair

### Applications:

- Military tactical communications
- Petrochemical
- Broadcast
- Mass Transit

### Materials:

- Land based applications - Anodized high grade lightweight alloy
- Marine based applications - Nickel Aluminium Bronze (High corrosion resistance)
- Neoprene BR568 boot



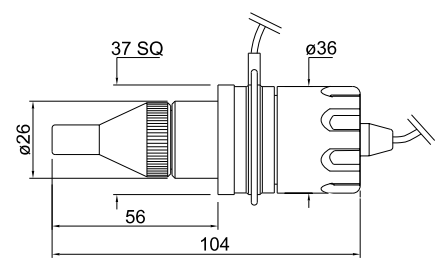
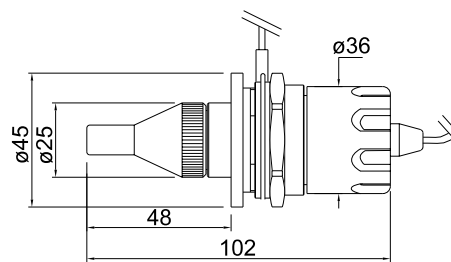
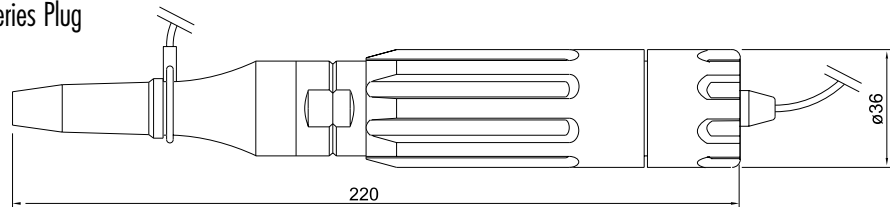
Performance:	
Optical Loss	50/125 @ 850/1300nm 0.6 dB typ 9/125 @ 1310/1550nm 1.0 dB typ
Return Loss	9/125 @ 1310/1550nm >45dB (typical 48dB)
Operating temperature	-40 to +70(C)
Storage temperature	-55 to +85(C)
Water immersion	up to 2M depth
Vibration Sinusoidal	10-500Hz, 0.75 amplitude @ 10g acceleration
Free fall resistance	500 falls onto concrete from 1.2M height
Bump resistance	4000 bumps @ 40g acceleration
Tensile Strength	Tensile of 2000N, cable dependent
Cable Variations	Compatible with tactical cable: Plug ≤9mm o/d Bulkhead ≤6mm o/d Other cable sizes available on request

All tests compliant to BS EN 186000-1 specifications

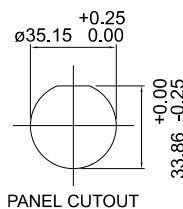
### Technical Drawings

All dimensions are in mm

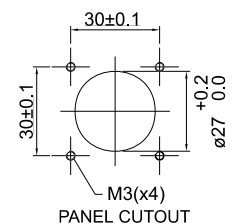
900 Series Plug



900 Series  
Jam Nut Bulkhead



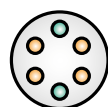
900 Series Flange  
Mount Bulkhead



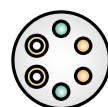
### Planforms



2 channel



4 channel



Hybrid 2+2



Hollands Road Industrial Estate, Haverhill,  
Suffolk CB9 8PR England  
Tel +44(0)1440 706441 Fax +44(0)1440 762044

7444 West Wilson, Chicago, IL 60706 USA  
Tel +1(708) 867 9600 Fax +1(708) 867 9621  
Toll Free +1(800) 323 6858

Protective caps are included with assemblies unless otherwise stated  
Termination and repair kits are available

Stratos Ltd. is registered to BS EN ISO9001

Whilst due care has been taken to ensure the contents of this data sheet are accurate, Stratos Lightwave™ cannot accept liability for any errors or omissions that may occur. We reserve the right to alter specifications of products without prior notice.

